

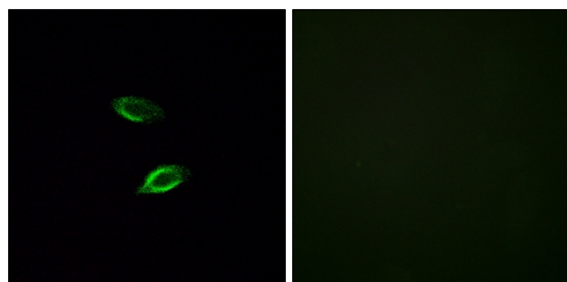


GPR157 Polyclonal Antibody

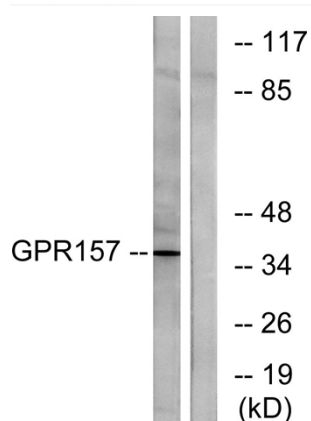
Catalog No	YP-Ab-13312
Isotype	IgG
Reactivity	Human;Rat;Mouse;
Applications	WB;IF;ELISA
Gene Name	GPR157
Protein Name	Probable G-protein coupled receptor 157
Immunogen	The antiserum was produced against synthesized peptide derived from human GPR157. AA range:81-130
Specificity	GPR157 Polyclonal Antibody detects endogenous levels of GPR157 protein.
Formulation	Liquid in PBS containing 50% glycerol, 0.5% BSA and 0.02% sodium azide.
Source	Polyclonal, Rabbit,IgG
Purification	The antibody was affinity-purified from rabbit antiserum by affinity-chromatography using epitope-specific immunogen.
Dilution	Western Blot: 1/500 - 1/2000. Immunofluorescence: 1/200 - 1/1000. ELISA: 1/5000. Not yet tested in other applications.
Concentration	1 mg/ml
Purity	≥90%
Storage Stability	-20°C/1 year
Synonyms	GPR157; Probable G-protein coupled receptor 157
Observed Band	37kD
Cell Pathway	Cell projection, cilium membrane ; Multi-pass membrane protein . Expressed in the primary cilia of radial glial progenitors (RGPs) exposed to the cerebrospinal fluid. .
Tissue Specificity	Mammary gland,Placenta,Prostate,
Function	function:Orphan receptor.,similarity:Belongs to the G-protein coupled receptor 2 family.,
Background	function:Orphan receptor.,similarity:Belongs to the G-protein coupled receptor 2 family.,
matters needing attention	Avoid repeated freezing and thawing!
Usage suggestions	This product can be used in immunological reaction related experiments. For more information, please consult technical personnel.



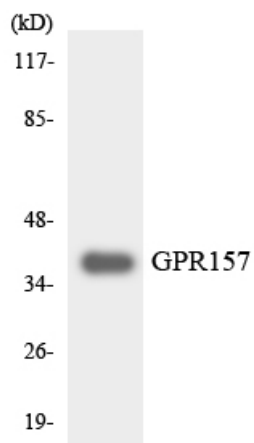
Products Images



Immunofluorescence analysis of HUVEC cells, using GPR157 Antibody. The picture on the right is blocked with the synthesized peptide.



Western blot analysis of lysates from NIH/3T3 cells, using GPR157 Antibody. The lane on the right is blocked with the synthesized peptide.



Western blot analysis of the lysates from RAW264.7 cells using GPR157 antibody.